

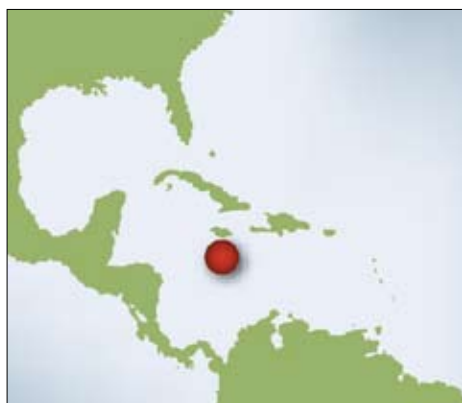
# Jamaica

## JAM Phase I & II Offshore 2D Surveys



**CGGVeritas and the Petroleum Corporation of Jamaica (PCJ) acquired an extensive long-offset 2D multi-client survey offshore Jamaica in preparation for the upcoming bid round in 2010. The survey is designed to delineate the tectonic setting and the prospectivity of the North and South Nicaragua Rise and its relation to the more well known area of the Walton Basin (Pedro Bank area).**

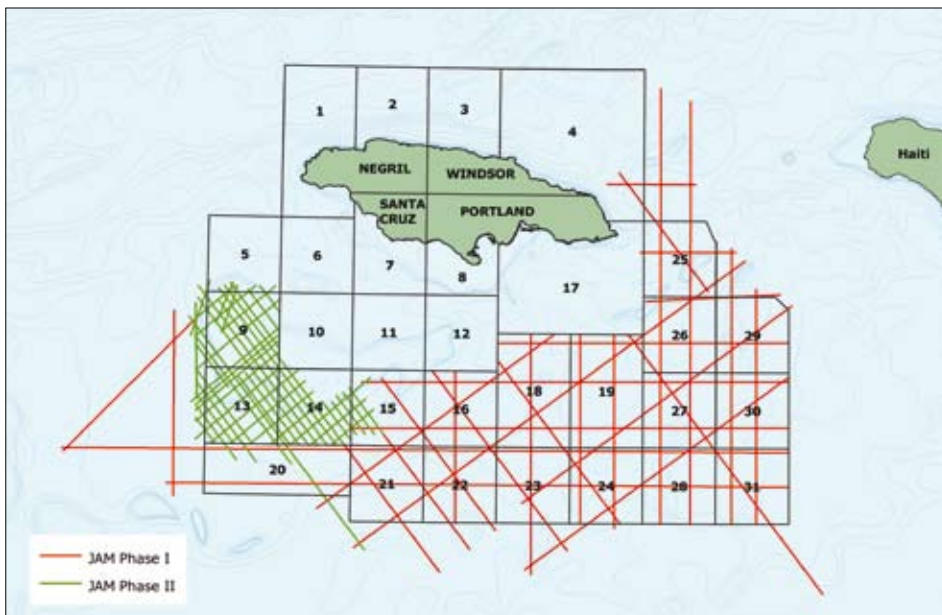
The survey covers a large and primarily unexplored area by means of modern seismic exploration techniques. The data ties to existing seismic, exploration wells and DSP sites.



### OFFSHORE JAMAICA

PCJ recently announced the 2nd official offshore bid round with a road show date of March 1, to be held in London in conjunction with APPEX. The second road show will take place in Houston in late April following the AAPG convention in New Orleans.

In an effort to provide the oil and gas industry with access to the tools needed to better analyze and understand the subsurface in the area, CGGVeritas acquired over 8,700 km of 2D multi-client data. The Eastern part of the survey (JAM Phase I) represents 6,118 km covering various offshore blocks of which all will be offered in the upcoming bid round. In addition, 2,594 km (JAM Phase II) were acquired over blocks 9, 13 and 14, currently under concession, which tie to the two exploration wells in the Pedro Bank.

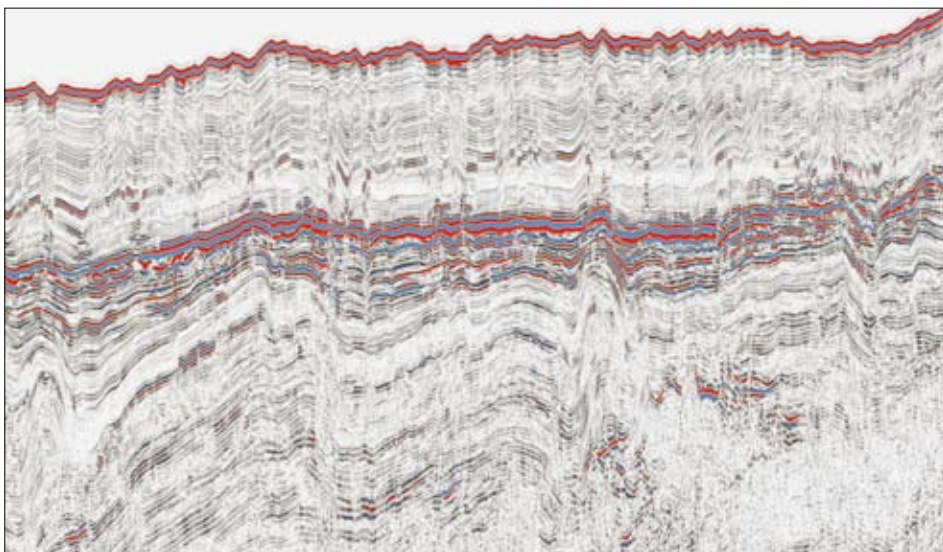


### JAM PHASE I

Survey size: 6,118 km  
Gravity/magnetic data available

### JAM PHASE II

Survey size: 2,594 km  
Gravity/magnetic data available



**M/V DISCOVERER 2****SEISMIC EQUIPMENT****Streamers and Sensors**

Streamers	Sercel - Fluid Seal - 24-bit
Max. deployed	9,450 m
Number of towpoints	1
Section length	150 m
Group length - no of hyd.	12.5 m - 8
Hydrophone type	SLH 20 or Geopoint
Section diameter	95.9 mm
Streamer sensitivity	17.4 Volt/bar
Number of channels	756 @ 2ms
Depth control	Digicourse 5011
Retrievers	OYO SRD 500S

**Recording**

Recording system	Sercel SEAL
Format	SEG D 8058
Recording media	Hard disk, IBM 3590, IBM 3592
Computer systems	Sun Blade 2500
Bird controller	Digicourse
Sampling	1/2, 1, 2, 4 ms
Aux. channels	16
Offline QC	Geotrace
Online QC	Argus Geotrace
QC systems	IBM/Linux

**Source/Mechanical**

Guns	Sodera G-gun
Chambers	40 - 300 cu/in
Clusters, 2 gun	16
Near-field hydrophones	AGH-7001C
Depth sensors	AGH-33M3
Source typical	Single 3980 cu. in. 1 x 4 subarrays
Source controller	RTS Big-Shot
NFH recording	Seismic Aux. Channels, SEG D
Timing resolution	100 uS
Max number of subarrays	6

**Navigation**

Primary navigation system	C-NAV 200 RTG
Integrated navigation system	Concept Systems Spectra
Navigation processing and QC SW	Concept Systems Sprint
Binning	n/a
Source positioning	RGPS
Streamer positioning	Compasses and RGPS
Compasses	Digicourse 5011
In-sea acoustics system	n/a
GRGPS system	Seamap
Echosounder	Kongsberg EA600, 18 & 200 kHz

**Worldwide Headquarters**

Paris	+33 1 64 47 45 00
Massy	+33 1 64 47 30 00
Houston	+1 832 351 8300

**CGGVeritas Marine Data Library**

Jean-Paul Baron	+1 832 351 8675
Melissa Payne	+1 832 351 8153

jean-paul.baron@cggveritas.com
melissa.payne@cggveritas.com